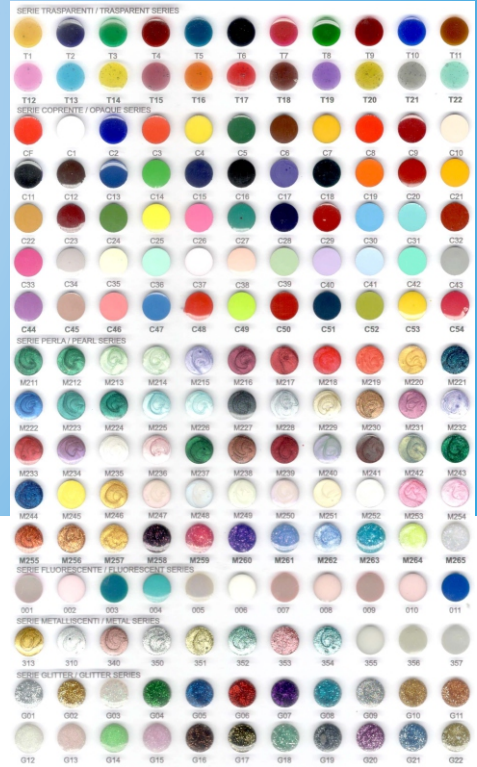


# Doit All In One



## Epoxy Enamel Chart



## E-Coating Chart



## DOIT CERAMIC CHART



**DOIT INDUSTRIES INDIA PVT. LTD.**

Certified ISO 9001:2015

Corporate Office :

Unit No.304, New India Industrial Estate, Near Paper Box, Off. Mahakali Caves Road, Andheri (East), Mumbai-400 093.

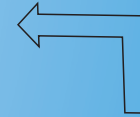
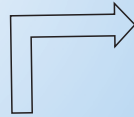
Tel : 022 42701234 / 022 40263692 Fax : 022 26879115 Email Id: sales@doitimex.com | website : doitindustries.in

Mumbai + Jaipur + Surat + Coimbatore + Kolkata + Agra + Hyderabad + Delhi



# Doit All In One

Manufactured by :



Doit Industries Introduced new ALL IN ONE OVEN for carrying out enamelling process on ceramic enamel as well as normal and enamel curing. ALL IN ONE OVEN is provided with mercury Xenon Lamps to work 390nm UV light for ceramic enamel curing and conventional Heating & Rotation for normal enamel curing. The All IN ONE OVEN combines the working of UV cabinet & the enamel cure oven.

## Appliances it includes:

- ▶ Tray provided for ceramic enamel curing
- ▶ Detachable grills
- ▶ Inside the tray, aluminium reflectors are used for better reflection.
- ▶ Two UV lights available for bigger surface
- ▶ UV chamber provided with locking system to protect from UV light
- ▶ 2 Rotation Rods Available
- ▶ Rotation Rods Speed Controller
- ▶ Temperature & Timer Controller

## Assembling process:

1. Apply Premium Bond.
2. Apply colorit color on hotplate.
3. Apply colorit color on the article.
4. Use lighter on piece.
5. Dry articles inside Doit Cermaic Oven.

<b>Epoxy</b> 10 colour	<b>Colorit</b> Colorit Colour	<b>E-Coating</b> E-Coating colour
<b>Catalyst for Curve</b>	<b>Colorit (Pekalux Power Led)</b>	<b>Catalyst for Curve</b>
<b>Catalyst for Flat</b>	<b>Light protection box</b>	<b>Enamel colour</b>
	<b>Hotplate</b>	<b>Magnetic Stirrer</b>
	<b>Glass mixing plate</b>	<b>Catalyst for Flat</b>
	<b>Application instrument</b>	<b>Masking Laker</b>
	<b>Instrument holder</b>	<b>Stripper Varmsh</b>
	<b>Ring holder</b>	<b>Rectifier</b>
	<b>Microbrush Regualr</b>	

Dimensions Type	Length	Width	Height
<b>Oven Internal Dimenions</b>	<b>650mm</b>	<b>750mm</b>	<b>710mm</b>
<b>Oven External Dimensions</b>	<b>360mm</b>	<b>520mm</b>	<b>360mm</b>
<b>Tray Dimenions</b>	<b>290mm</b>	<b>335mm</b>	<b>120mm</b>

**Note : Specialized COLORIT allows you to POLISH, BUFF and file after the process too.**

## DOIT INDUSTRIES INDIA PVT. LTD.

Certified ISO 9001:2015

Corporate Office :

Unit No.304,New India Industrial Estate, Near Paper Box, Off. Mahakali Caves Road, Andheri (East), Mumbai-400 093.

Tel : 022 42701234 / 022 40263692 Fax : 022 26879115 Email Id: sales@doitimex.com | website : doitindustries.in

Mumbai + Jaipur + Surat + Coimbatore + Kolkata + Agra + Hyderabad + Delhi

