

Enameling Machine

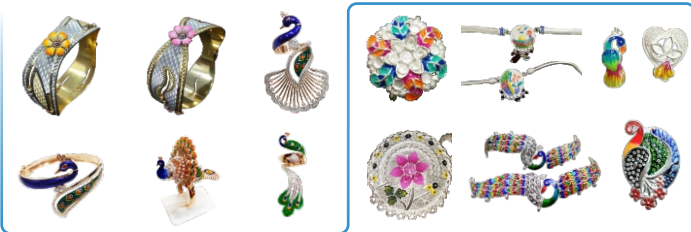
Made in Italy Assembled by :  **o it**



Catalyst for Flat & Curve



Enameling Oven



ENAMEL

Enamel is a two component product with a wide application. Enamel has an exceptional adhesion on all the surfaces including glass, noble metals, plastic matters, stone skins, wood, etc.

Enamel is resistant to scratches, bumps, mechanical pressure. It is also light resistant and its color remains unaltered over a period of time.

These special ENAMELS can be decorated by transfer of colors and designs on ENAMELS surfaces. This process is done using transfer foil of different designs. After application of the desired design the piece can be polished and plate.

Physical and Chemical characteristics:

Shape and color	: Liquid
Smell	: Light
pH	: About 8
Boiling point	: >200°C
Inflammability	: >150°C
Relative density	: 1.17g/ml at 25°C

The compact baking oven is specially made for ENAMELS application; it allows for high production volumes, maintaining top quality standards. The most important characteristics is thermostatic system which keeps the selected temperature even by means of hot air circulation. It includes:

- ▶ Vapor dispersion system
- ▶ Timer
- ▶ Temperature control
- ▶ Speed aviators
- ▶ Internal light
- ▶ Glass door for easy inspection
- ▶ Rotational rods for curved products

KIT INCLUDES

10 colour

Catalyst for Curve

Catalyst for Flat

TRAINING

CODE	Enameling Big Oven
Dimensions	29" x 25" x 24"
Input Voltage	230 V , 50/60 Hz
Weight	44 kg
Power	2.6 kw
Temperature control	0 - 280°C
Timer	0 - 60 mins
Rotational Rods	2
Tray	4

DOIT INDUSTRIES INDIA PVT. LTD.

Certified ISO 9001:2015

Corporate Office :

Unit No.304, New India Industrial Estate, Near Paper Box, Off. Mahakali Caves Road, Andheri (East), Mumbai-400 093.

Tel : 022 42701234 / 022 40263692 Fax : 022 26879115 Email Id: sales@doitimpex.com | website : doitindustries.in

Mumbai + Jaipur + Surat + Coimbatore + Kolkata + Agra + Hyderabad + Delhi



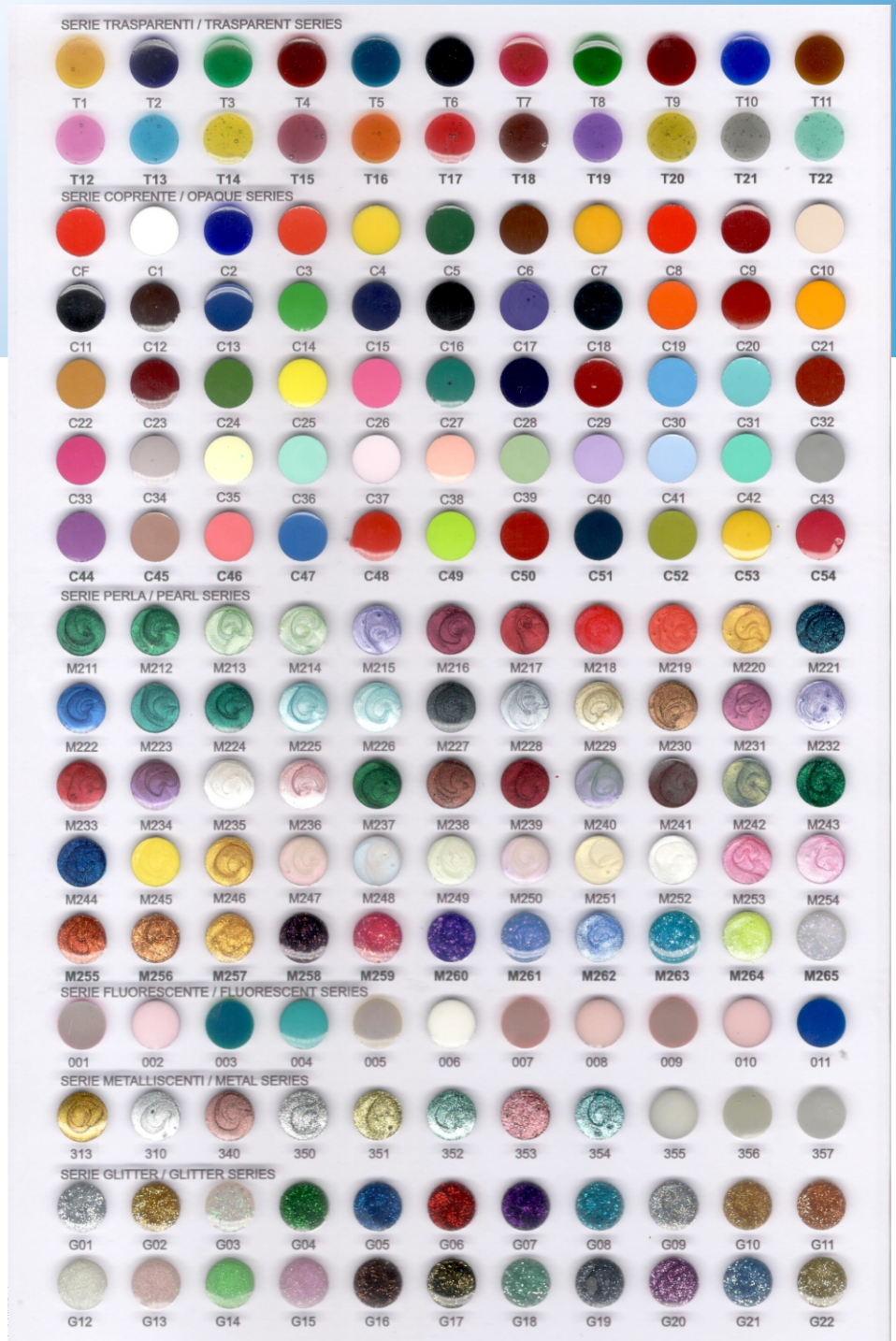
Enamel Color Chart

Marketed by :  **o it**[®]



Colour Series :

- ◆ Transparent
- ◆ Opaque
- ◆ Pearl Finish
- ◆ Fluorescent
- ◆ Metal Finish
- ◆ Glitter Finish
- ◆ Curve Hardener
- ◆ Flat Hardener
- ◆ Glitter Powder
- ◆ Mother of Pearl Powder
- ◆ Thick Neutral



DOIT INDUSTRIES INDIA PVT. LTD.

Certified ISO 9001:2015

Corporate Office :

Unit No.304, New India Industrial Estate, Near Paper Box, Off. Mahakali Caves Road, Andheri (East), Mumbai-400 093.

Tel : 022 42701234 / 022 40263692 Fax : 022 26879115 Email Id: sales@doitimpex.com | website : doitindustries.in

Mumbai + Jaipur + Surat + Coimbatore + Kolkata + Agra + Hyderabad + Delhi

